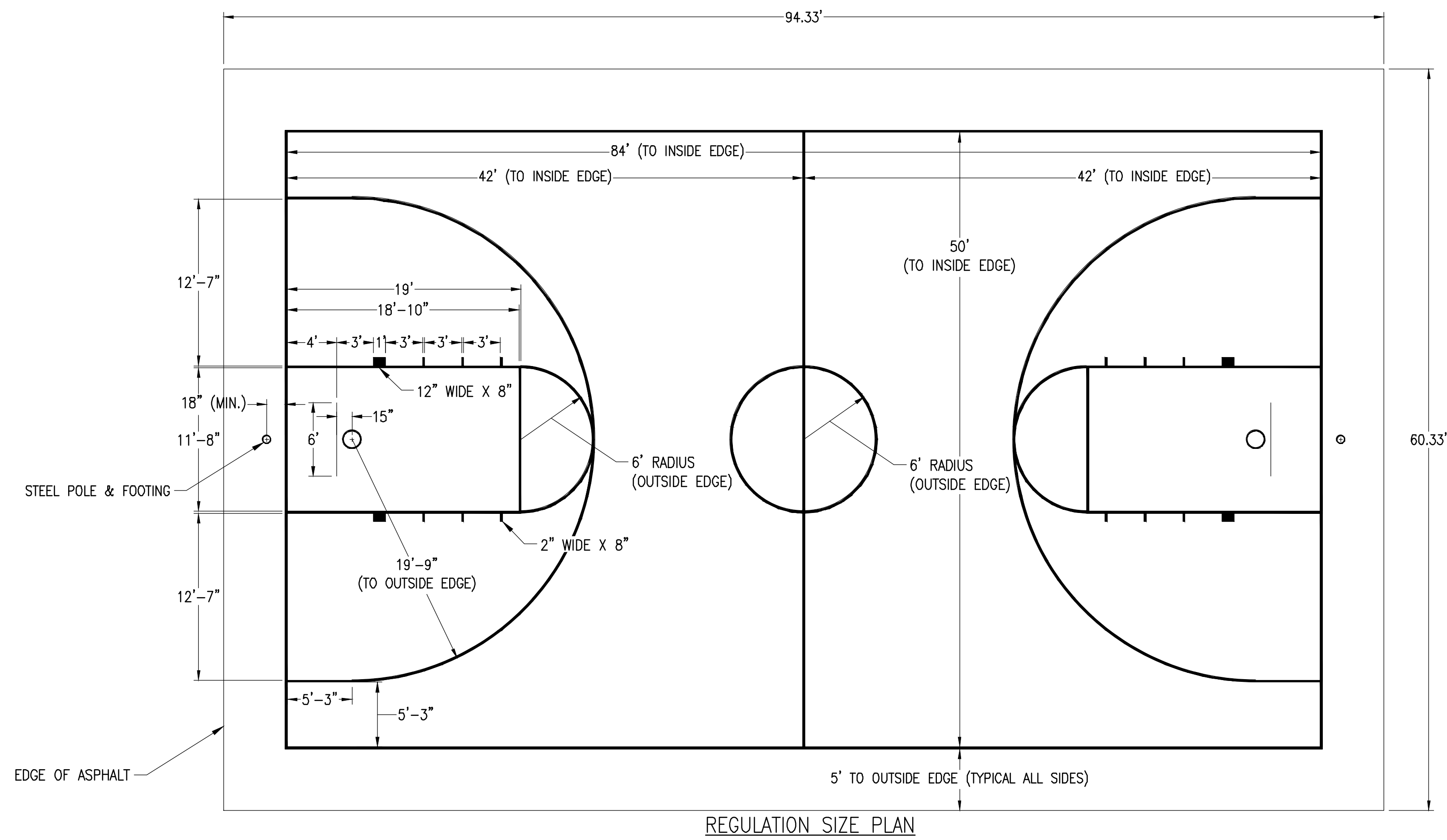
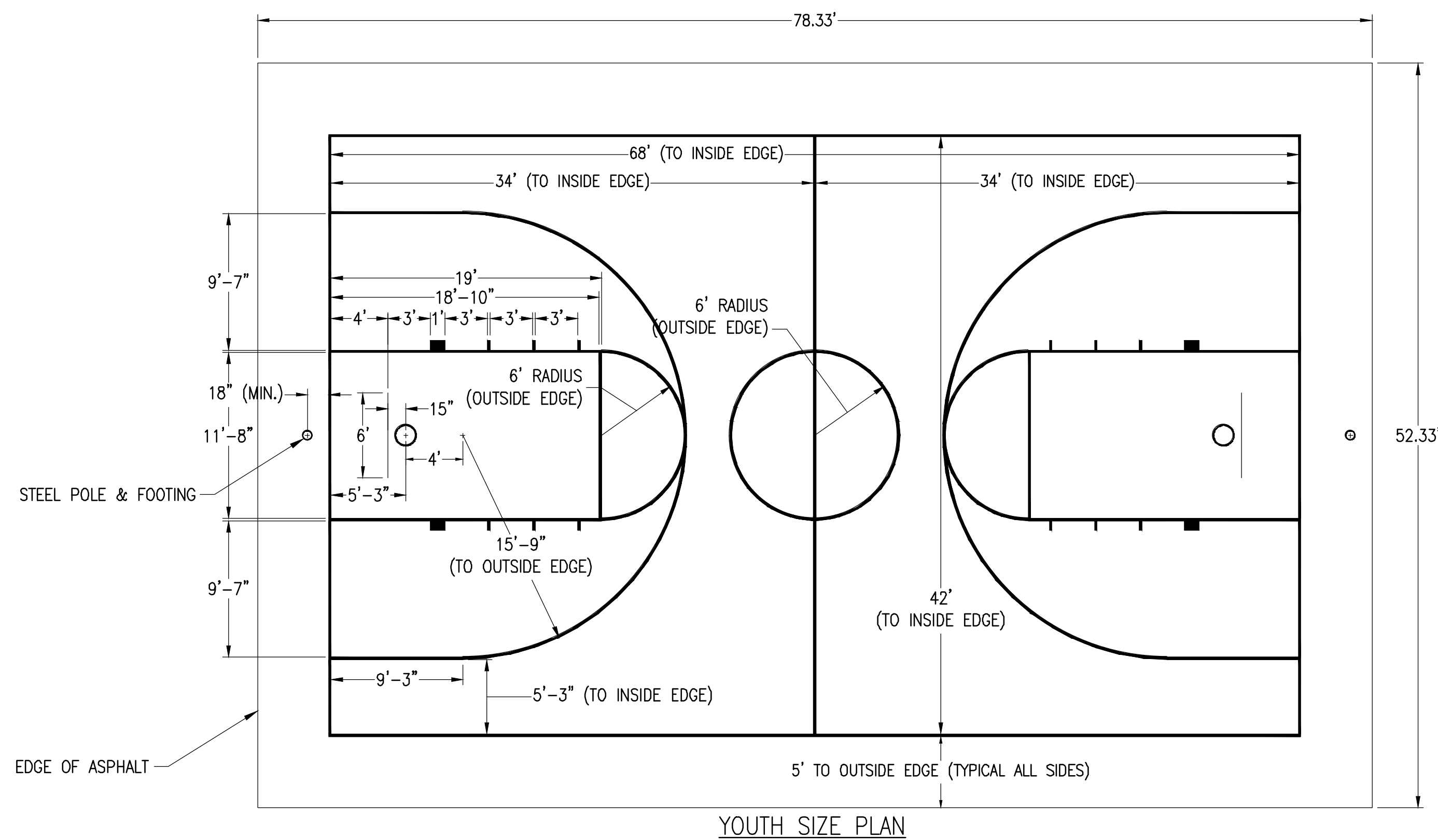


S:\2021 Projects\2021-05 Milton Sportsplex Basketball Courts\DWGS\CIVIL\21-05\_C20X.dwg, Aug 10, 2023 - 9:40:15AM, wait



REGULATION SIZE PLAN



YOUTH SIZE PLAN

NOTES:

1. ALL STRIPING TO BE WHITE, 2" WIDE UNLESS OTHERWISE STATED.
2. SUBMIT STRIPING MATERIAL INFORMATION TO DEMONSTRATE CONFORMANCE WITH FDOT SPECIFICATIONS.
3. GOAL POSTS SHALL BE MODEL 656 OUTDOOR BASKETBALL GOOSE NECK, GALVANIZED STEEL, 5-9/16 INCH DIAMETER SCHEDULE 40 POST WITH DIRECT MOUNT WELDED TO GOOSENECK, AS MANUFACTURED BY JAYPRO SPORTS, 976 HARTFORD TURNPIKE, WATERFORD, CT 06385, OR APPROVED EQUAL.
4. BACKBOARDS SHALL BE MODEL SR-PERF, 42 INCH X 72 INCH PERFORATED STEEL BOARD, AS MANUFACTURED BY JAYPRO SPORTS, 976 HARTFORD TURNPIKE, WATERFORD, CT 06385, OR APPROVED EQUAL.
5. GOALS SHALL BE MODEL GBSG-50 SUPER GOAL, AS MANUFACTURED BY JAYPRO SPORTS, 976 HARTFORD TURNPIKE, WATERFORD, CT 06385, OR APPROVED EQUAL.
6. ALL EQUIPMENT AND ITEMS, INCLUDING GOAL POSTS, GOAL POST FOOTINGS, FOOTING STEEL REINFORCEMENT, BACKBOARDS AND GOALS, SHALL BE INSTALLED PER MANUFACTURERS RECOMMENDATIONS.
7. CONCRETE, STEEL REINFORCEMENT AND ISOLATION JOINTS FOR GOAL POST FOOTINGS SHALL BE AS PER "CAST-IN-PLACE CONCRETE" SECTION OF THE PROJECT TECHNICAL SPECIFICATIONS.
8. ALL CONCRETE FOR GOAL POST FOOTINGS SHALL BE 4,000 PSI, 28-DAY COMPRESSIVE STRENGTH. ONE (1) COMPRESSIVE STRENGTH TEST SHALL BE TAKEN FOR EACH GOAL POST FOOTING INSTALLED.

1 COURT GEOMETRY PLAN (NOT TO SCALE)



FOR BIDDING

NO.	DATE	REVISIONS
1	8-25-23	ADDENDUM 1
<p><b>Kenneth Home &amp; Associates, Inc.</b> CIVIL ENGINEERS</p> <p>PO BOX 10669, PENSACOLA, FLORIDA 32524 7201 N. 9TH AVENUE, SUITE 6, PENSACOLA, FLORIDA 32504 (850) 471-9005 info@kh-a.com FAX (850) 471-0093</p> <p>FL CERTIFICATE OF AUTHORIZATION NO. 8289</p>		
<p><b>MILTON SPORTSPLEX ADDITIONS 2021</b></p> <p><b>COURT GEOMETRY PLAN</b></p> <p>SANTA ROSA FLORIDA</p>		
DRAWN BY:	WPM	PROJECT NO: 2021-05
DESIGNED BY:	WPM	C202
CHECKED BY:	WPM	SHEET: 6 OF 19
DATE:	5/9/2023	
SCALE:	NOT TO SCALE	
FOR CONSTRUCTION BY:	NOT	
DATE:		

KENNETH C. HORNE FL PE 40149